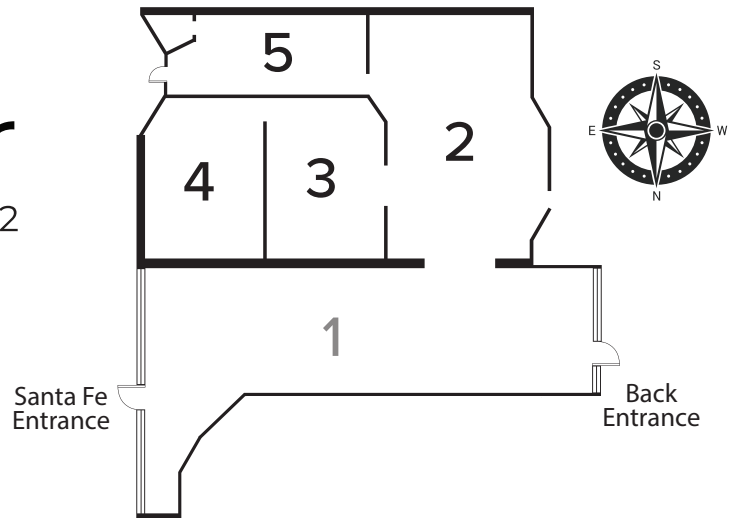
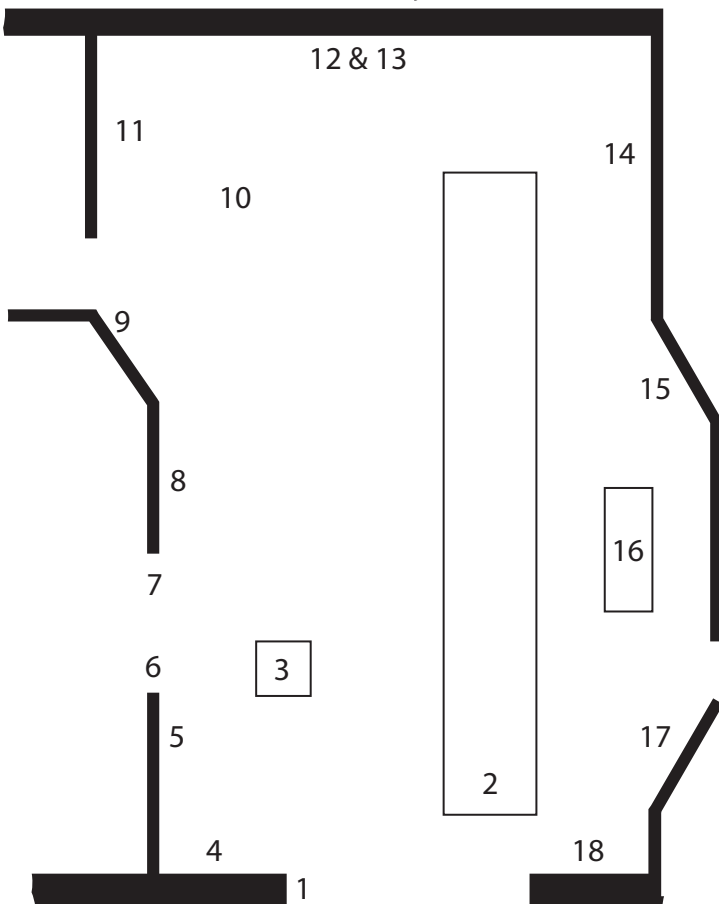


FRANK SHAW
ReConsider
 September 28 - December 31, 2022

Artwork Map

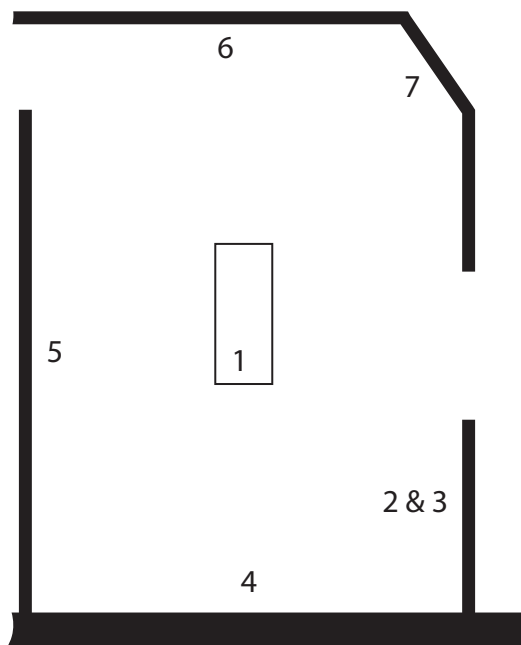


Gallery 2



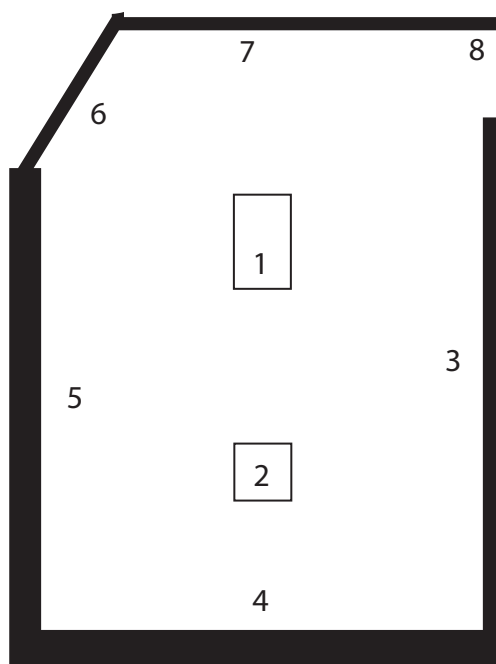
1. *What Happened?*, various materials
2. *Inheritance*, tags and keys
3. *The Haunt*, wood
4. *View Lost*, window, 6 mysteries some paper tags
5. *Baggage*, suitcase and various papers
6. *Atonement*, ruler
7. *Letters from God*, metal, gold leaf
8. *Backwards*, wood, metal and rope
9. *Synecdoche*, wood
10. *So It Goes*, metal pails
11. *The Answers*, various materials
12. *The Hallowed*, wood
13. *Reckoning (A trace of what it was)*, Ink on velum
14. *Household primer*, metal and wood
15. *34,432 Days*, various materials
16. *Salvaged dream*, wood
17. *Uncoupled*, rope
18. *Innermost of All*, cabinet and copper

Gallery 3



1. *So We Go*, wooden stools and drop cloth
2. *There, Then*, wood and drop cloth
3. *Indecipherable Days*, graphite on paper
4. *Couple*
Combine
Join
Splice
Knot
Merge
Unite
Wed
Union
Bind
Marry
rope, wood, and metal
5. *Yesterday was tomorrow*, various materials
6. *Stories told*, various materials
7. *Held*, sisal

Gallery 4



1. *Either Neither Both*, paint on wood
2. *To Find The Heaven Below*, compasses
3. *Love Means Everything*, paper
4. *(Un)certainity*, graphite on wood
5. *It Was Evening All Afternoon*, various materials
6. *Short Long, Long Short*, graphite on wood
7. *Head and heart*, wood and levels
8. *Akin*, various materials

Gallery 5



Reliquary

Assorted fetishes, relics, and condundrums

1. *What might have been and what has been*, fabric
2. *121 days*, wooden box