



SALINA ART CENTER 2007/2008 ANNUAL REPORT





TO CREATE EXCHANGES AMONG ART, ARTISTS AND AUDIENCES THAT REVEAL LIFE

FROM THE BOARD PRESIDENT

In her collection of short stories, *Unaccustomed Earth*, Pulitzer Prize-winning writer Jhumpa Lahiri explores themes of belonging and change in the lives of Bengali Indians in America. Lahiri's themes struck me as relevant to this past year at the Salina Art Center. India has been much on our minds this year, with the spectacular exhibit, *New Narratives: Contemporary Art from India*. Change, too, is in the air, as we said goodbye to Executive Director Heather Ferrell, who left in June to lead the Salt Lake Art Center in Salt Lake City, Utah. And yet, a strong sense of belonging – of ownership – endures in all of us. This has indeed been a special year for all of us who care about the Art Center.

Let's begin with the exhibitions: The art we saw in the Art Center's galleries this year was as varied as the human experience, beginning in the fall with Jon Rappleye's *Strange World* and ending with *Leaded: The Materiality and Metamorphosis of Graphite*. In between, India traveled to us. *New Narratives* was a unique experience for an American gallery. The exhibition became a community event. The Art Center staff stood at the center of this beautiful "storm" of programming, poised and prepared as always.

This year also marked the completion of the Warehouse renovation project. The result is a live/work space that brings our vision of an artist residence program to life. The successful completion of this project is the result of dedicated leadership from Heather Ferrell and a trio of volunteers: project manager Norm Yenkey, and Warehouse Committee Co-Chairs Betsy Scholten and Barb Snyder. Their gifts of time, expertise, and energy made this project possible. The Board cannot begin to thank Heather, the other staff, Norm, Betsy, Barb, and all of the other committee members and volunteers enough for seeing this renovation to completion.

This report would not be complete, of course, without a word about Heather Ferrell's departure and contributions. Heather led the Art Center with a passion that informed everything the Art Center did during her tenure. We are grateful for her leadership and will miss her personally. We hope that our paths cross again through professional collaboration and friendships. Her talent offers such promise for the former, and she leaves here with an abundance of the latter.

Wendy Moshier will serve as Interim Executive Director. She has given a professional lifetime of service to the Art Center, and she has the Board's undying

thanks. We could not be in better hands. The Board will engage in a search for the next Executive Director this fall, following a period of purposeful and deliberate reflection about the Art Center's needs.

In June, I had the opportunity to attend the convening of the Warhol Initiative grant recipients sponsored by the Andy Warhol Foundation for the Visual Arts. I joined executive directors and other board presidents from art institutions across the country in New Orleans for a dialogue on the future of our institutions. I saw and heard again the sterling reputation the Art Center holds in the arts community. Colleagues from other regions of America had not simply heard of the Salina Art Center, but knew something positive about us. Colleagues from our region bragged in my presence about the remarkable things the Salina Art Center has done and is doing. I find that there is good cause for the optimism that has always permeated the Art Center's walls. Our mission is respected around the country. We honor our mission by continuing to aggressively pursue the best in provocative, thought-provoking contemporary art. The Board is committed to our mission. The staff is simply the best group of people you will find in any organization. The Art Center's life continues, and its future is bright. Thank you for allowing me this opportunity to contribute my voice to the discussion as Board President this year.



Peter Johnston

*President
Salina Art Center
Board of Trustees*



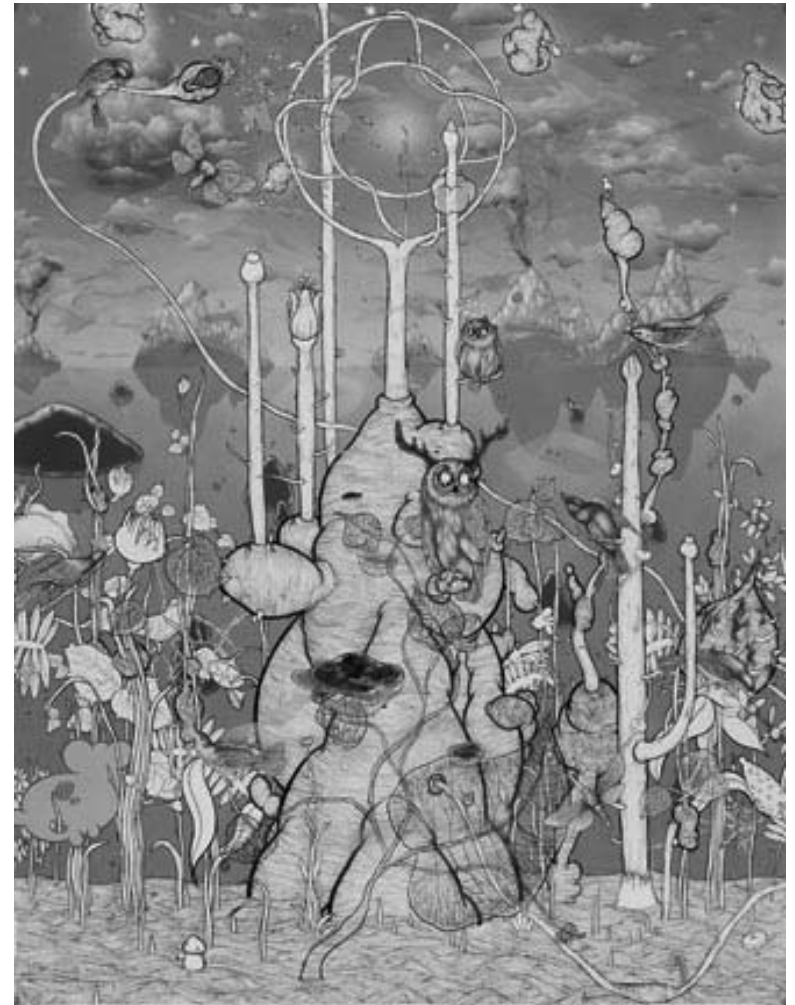
E X H I B I T I O N S

STRANGE WORLD: JON RAPPLEYE

September 6 through December 16, 2007

The paintings of Jon Rappleye evoked ideas of homespun fairy tales, combining investigations of cultural folklore with his own personal mythology. Within fantastic worlds abounding with flora, fauna, and hybrid creatures, the New Jersey artist explored the impact of technology on ecology. Animals inhabited unfamiliar terrains, tree trunks assumed strange anthropomorphic shapes, and skies ranged in color from verdant green to industrial yellow. Through his paintings Rappleye utilized nature as a vehicle to explore the boundaries of reality and artifice, leaving mankind's impact on the environment blurred and open to question.

Organized by the Salina Art Center. Special thanks to the Artist, Lenders, and Jeff Bailey Gallery, New York, for helping make this exhibition possible.



Jon Rappleye
In the Tremble this Nature Abounds
2007
Acrylic on paper
40" x 52"
Courtesy of the Artist and
the Jeff Bailey Gallery, New York

NEW NARRATIVES: CONTEMPORARY ART FROM INDIA

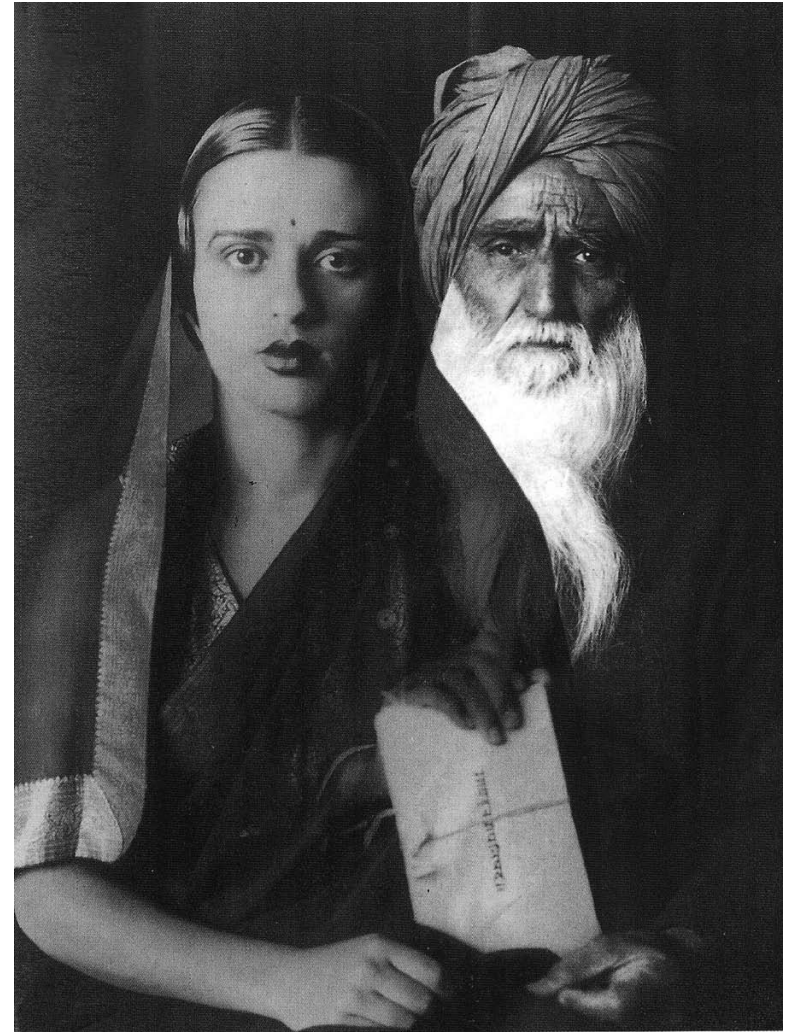
January 10 through March 16, 2008

This was the first exhibition in the U.S. to feature artwork of the 21st century created in India, with many works coming straight from the studios of artists in various cities of the subcontinent. Twenty-one artists and sixty works of art were represented in this extensive exhibition of paintings, photographs, sculptures, installations, and works in video and new media. Visitors left the show with a new level of understanding and renewed interest in India, one of the oldest yet most rapidly changing cultures on earth and an exciting place between East and West where new art in all media is being produced today.

In conjunction with *New Narratives: Contemporary Art from India*, several local organizations and businesses provided Indian cultural experiences to enhance the exhibition's impact in our community.

Organized by the Chicago Department of Cultural Affairs, this exhibition was curated by Betty Seid and is made possible through the leading sponsorship support of The Boeing Company, the Philancon Fund at the Boston Foundation, and Exelon Corporation, as well as generous contributions from Catherine Glynn Benkaim and Barbara Timmer, Barbara and David Kipper of the Kipper Family Foundation, Susan Beth Kaplan of the Rita J. and Stanley H. Kaplan Family Foundation and the Margot and Thomas Pritzker Family Foundation.

Special thanks to Kansas Wesleyan University for their in-kind support in presenting portions of New Narratives: Contemporary Art from India at The Gallery in Sams Hall of Fine Arts.



Vivan Sundaram
Father-Daughter
2001
Digital photomontage
19" x 14"
Courtesy of Walsh Gallery, Chicago

LEADED: THE MATERIALITY AND METAMORPHOSIS OF GRAPHITE

April 3 through August 10, 2008

Leaded featured 44 artworks by 16 contemporary artists who utilized the physical nature and characteristics of graphite and pencils as content in their two- and three-dimensional work. The art in *Leaded*, while employing a fundamental drawing media, stands outside of the generalized history of modern drawing. The role of mark-making was subsumed or completely absent from many of the pieces. Likewise, representation was a secondary motivation. The title *Leaded* refers to the inaccurate yet still-used term "lead pencil" and its symbiotic relationship between object and material. The fact that the material is popularly misnamed parallels the transformative and metaphorical role of graphite in art. *Leaded* presents artwork grouped into three overlapping themes: Graphite as Content, Graphite as Transformative Agent, and Graphite as Sculpture.

Organized by the University of Richmond Museums, Virginia, and organized for tour by International Arts & Artists, Washington, DC.



Mark Sheinkman
4 19 2007
2007
Oil, alkyd and graphite on canvas
66" x 60" x 2"

A SPECIAL THANKS TO OUR SALINA ART CENTER EXHIBITION ARTISTS

STRANGE WORLD: JON RAPPLEYE. **NEW NARRATIVES: CONTEMPORARY ART FROM INDIA:** JAYASHREE CHAKRAVARTY, SHEBA CHHACHHI, ANJU DODIYA, ATUL DODIYA, ANITA DUBE, SHILPA GUPTA, SUBODH GUPTA, N. S. HARSHA, TUSHAR JOAG, RANBIR KALEKA, JITISH KALLAT, REENA SAINI KALLAT, NALINI MALANI, PUSHPAMALA N., TEJAL SHAH, GULAMMOHAMMED SHEIKH, VALAY SHENDE, ARPITA SINGH, VIVAN SUNDARAM, VASUDHA THOZHUR, HEMA UPADHYAY, BINA HIRANI. **LEADED: THE MATERIALITY AND METAMORPHOSIS OF GRAPHITE:** THE ART GUYS, JAMES BUSBY, HSIN-HSI CHEN, CHRISTOPHER COOK, MEGHAN GERETY, MICHAEL JOAQUIN GREY, SARAH LOVITT, MARCO MAGGI, STEFANA MCCLURE, CREIGHTON MICHAEL, SHIMON OKSHTEYN, GLORIA ORTIZ-HERNANDEZ, MARK SHEINKMAN, STEPHEN SOLLINS, MOLLY SPRINGFIELD.

A R T I S T I N I T I A T I V E

Recognizing the vital impact of artists who serve communities as thinkers, leaders, and agents for positive change, the Salina Art Center relies upon partnerships with artists to champion the role of creative expression in community and individual development.

The Initiative is an integrated cycle of programs aimed at increasing artists' opportunities for in-depth interaction and exchange of ideas with diverse individuals in varied settings, inviting questions and conversations that encourage new ways of seeing and thinking. The three primary components—*Artist-in-Residence*, *Artist at Work*, and *Artist Exchange*—foster the creation of new work that merges local, regional, national, and international perspectives, resulting in evolving expressions of the Salina region, its progressive growth, and the role of the Art Center in stimulating vital community conversations.

Artist Initiative is made possible in part by the Horizons Grants program of the Salina Arts and Humanities Commission, City of Salina, and the Warhol Initiative program of the Andy Warhol Foundation for the Visual Arts, Inc.

ARTIST-IN-RESIDENCE/WAREHOUSE

As renovation plans continued on the Warehouse, the *Building for the Future* exhibition, featured in the Salina Art Center galleries from October 31 – December 16, 2007, outlined the exciting process of the renovation. The quickly-expanding *Artist-in-Residence* program featured New Jersey artist Jon Rappleye and Lawrence, Kansas artist Matthew Burke. Rappleye's residency during October and November was highlighted by his *Artist at Work* presentation, student workshops and open studio hours. Burke's residency included two workshops involving area youth as the artist prepared for his Smoky Hill River Festival installation, *The Massasauga Project*. Festival-goers were invited to join Burke in the construction of a large sculpture made of native hardwoods from June 12-15, 2008.



Artist at Work: Jon Rappleye

ARTIST AT WORK

Promoting discussions among Kansas artists that engage professional visiting artists with their artistic peers, this year's *Artist at Work* program included presentations by New Jersey artist, Jon Rappleye, on November 29, and Pennsylvania artist Mark Dion on March 7. Rappleye, a SAC artist-in-residence and exhibition artist, discussed his experiences in Salina and entertained questions regarding his artistic process. Dion, an internationally renowned sculpture and installation artist, gave the Salina community and regional artists a unique look at the ways in which both modern and traditional scientific collection and methods influence his art and process.

ARTIST EXCHANGE

September 2007 through August 2008

The *Artist Exchange* is a mentoring process that enables local and regional artists to teach and learn together while engaged in challenging, innovative work over the course of a year. Three regional artists were invited to serve as one-on-one mentors to three mentorees selected through an application process which sought artists who were embarking on new work, taking their work in new directions, or striving to advance the level of their work, with mentors serving on the selection committee.

The 2007-08 Exchange matched Cindy Zimmerman (Salina) with Richae Morrow (Salina), Conrad Snider (Newton) with Peggy Medina (Salina), and Ann Resnick (Wichita) with Rachel Epp Buller (Newton). These artists communicated and met regularly as they developed work for the culminating exhibition at the Art Center. Participants documented their methods and insights in personal journals as they shared ideas, discussed concepts and techniques, and refined their artistic philosophies. In addition to meeting as mentor-mentoree pairs, the full group came together three times during the year to participate in retreats with Art Center staff members. At these sessions, artists engaged in wide-ranging discussions about creative processes and progression of ideas that served as motivating forces in their art making.



Artist Exchange SAC retreat



E D U C A T I O N

The Salina Art Center's mission, *to create exchanges among art, artists, and audiences that reveal life*, is at the heart of its educational programming. Opportunities are designed to enhance understanding and relate the issues and ideas represented in contemporary art to everyday life.

TOURS

Over 1600 visitors participated in 87 guided tours this year. In September and October, gallery tours were augmented by the unique opportunity to observe and visit with resident artist, Jon Rapple. From January through March, 20 school groups, totaling 435 visitors, toured *New Narratives: Contemporary Art from India*. Many teachers enriched their classroom curriculum with films, cuisine, art-making activities, and writing exercises related to the exhibition. Over 575 people toured the *Leaded* exhibition from April through June, stopping in the ARTery to experiment with the graphite medium.

PROGRAMS AND CLASSES

CLASS: ART IN PUBLIC PLACES: A DIALOGUE

October 18 and 25 and November 8 and 15, 2007

What is the role of art in the community? What is its relevance in Salina, now and in the future? In conjunction with the Salina Public Library's CLASS offerings, Heather Ferrell collaborated with Karla Prickett, Visual Arts Coordinator at the Salina Arts & Humanities Commission, and Deborah Schwartz, Public Art Coordinator for the City of Palm Desert, California to present four classes that introduced the history, artists, issues and controversy surrounding public art.



Strange World exhibition and the Gerry Neustrom memorial exhibition

GERRY NEUSTROM: YOUNG ARTIST CHALLENGE

April 12 through May 4, 2008

The 15th Annual Gerry Neustrom Young Artist Challenge exhibit was held at Salina's Central Mall. This memorial competition and exhibition is supported by Gerry Neustrom's family to honor her interest in encouraging and recognizing aspiring young artists. High school students in central and northwest Kansas were invited to submit artworks created during the school year. Juror Mary Sue Foster, Professor of Art and Director of Art Education at Wichita State University, selected 73 works from over 440 submissions. Foster congratulated the students on their inventiveness, ability, talent and hard work.

SNAPSHOTS: LIVES IN TRANSITION

September through December 2007

Exhibition: December 6 through 16, 2007

Snapshots is a program designed to give high school students a chance to express and share their lives through art. It provided an opportunity for community members to develop a better understanding of and appreciation for the lives, insights, and talents of young people. Students from Opportunity Now! Education Center worked with area artists Lee Becker, Lori Wright, and Robin Ginther and SAC's Curator of Education Ann Marie Kriss during the fall semester to create artworks using photography, collage, and text. These artworks were shown in the December culminating exhibition at the Salina Art Center.

Funding for Snapshots was provided in part by the Community Health Investment Program of the Salina Regional Health Foundation and the Kansas Arts Commission, a state agency.



Snapshots: Lives in Transition

ADDITIONAL PROGRAMS AND CLASSES

Throughout 2007-2008

ARTBASICS

Students ages 8 to 14 learned and practiced the fundamentals of art in these multi-session drawing and painting classes. ARTbasics, offered in the summer, is taught by veteran educator and artist Bill Hottman.

ARTBREAK

During the week of spring break, students from Big Brothers Big Sisters and Cottonwood Elementary School interacted with artist and educator Cindy Zimmerman to experience a variety of different art disciplines, materials, and processes.

ARTERY

In this free, interactive arts lab, children, families, and visitors of all ages engaged in learning activities that related to school curriculum and current exhibitions, encouraging thoughtful creativity through artistic exploration and problem solving.

DISCOVERERS

During the school year, middle school students, selected by teachers and counselors, visited the Art Center once a week to work with visiting artists and SAC staff to experience a variety of art media that included photography, drawing, painting, and sculpture.

DOCENT PROGRAM

Volunteers and staff participated in monthly discussions of exhibitions and useful learning and teaching resources, as well as occasional field trips to other museums in the region.

GALLERY TOURS

Students and community groups experienced contemporary art through tours led by docent educators. Offered year round, tours are age-appropriate, interactive, and include hands-on art activities.

MULTIARTS

Thirty-nine preschoolers ages 4 to 6 learned the fundamentals of art in an 8-week series of classes that integrated visual arts, drama, music, and creative movement. MultiARTs was taught by artist Katy England and dance instructor Tamara Howe and was coordinated in partnership with Salina Parks and Recreation.

SECOND SUNDAYS

Children and accompanying adults created art together in two-hour intergenerational sessions, held monthly in the ARTery and guided by instructor Anne Nettleton.

SUMMERART

Each summer the Art Center offers two months of week-long art classes for preschool through eighth grade students and adults taught by local artists and art educators. This year's program was offered in partnership with Salina Parks and Recreation and made possible in part with support by Sunflower Bank and Green Lantern Car Washes.

S P E C I A L E V E N T S

FUNDRAISERS

This year, the Art Center hosted two annual events that focused on fun, food, music, and raising funds for SAC's exhibition and education programs. In the fall, *Grape Expectations* featured wine tasting and a gourmet cocktail buffet by Murray Gorman. In the spring, the last annual *Pignic* was held with guests toasting the 25th and final year of the "Pig." The fifth annual *Mardi Gras*, a benefit for the Art Center's endowment fund, took place in February and featured the musical sounds of Needfire and the Cajun creations of some of Salina's best chefs (and *Mardi Gras* hosts).



Grape Expectations silent auction



25th and final year of Pignic



Fifth annual Mardi Gras

TGIT(Thursday)

September 20, 2007

Teams, trivia, jokes, prizes, art, conversation, food, and fun were all part of this evening at the Art Center designed especially for the 20 to 40 year-olds who were looking for a great time in an alternative place.

FIRST THURSDAY ART RUSH

Conversations with artists, exhibition openings, gallery walks, lectures, and discussions were featured during the Art Center's Art Rush programs that took place on the first Thursday of each month throughout the year. The Art Center joined Salina Downtown's galleries, businesses, restaurants and other venues in offering community members a variety of memorable art experiences centered around the Art Center exhibitions and visiting artists-in-residence.

OPEN HOUSES

Pumpkin Carving in October, *Holiday Open House* in November and *Spring Open House* in April brought record numbers of children, parents, grandparents, and friends to the Art Center for seasonal art activities, exhibition tours, refreshments and fun. Festivities included decorating pumpkins, creating holiday cards, bubble blowing and chalk art.

TEACHERS' NIGHT OUT

August 16, 2007

A celebration of teachers and all that they do for students, *Teachers' Night Out* recognized Salina area teachers, administrators, counselors, librarians and nurses during an Art Center evening that featured food, conversation, door prizes, and camaraderie.

Teachers' Night Out was sponsored by *First Bank Kansas* and co-sponsored by *See to Learn, Salina Optometrists*.

MILTON MARATHON: A READING OF PARADISE LOST

October 20, 2007

Through a collaboration between the Salina Art Center and the Salina Arts and Humanities Commission, Milton fanatics and the merely curious gathered at the Salina Art Center for a marathon reading of Milton's epic poem, *Paradise Lost*. Everyone attending was encouraged to read as many lines from the 10,000 line poem as they wished. Readers included members from the Salina community as well as visiting guest Professor Michael Donnelly from Kansas State University. Over 40 people attended the come-and-go festivities. The reading concluded over ten hours later with four faithful readers still standing. John Milton would have been proud.



Three Perspectives on New Narratives First Thursday Art Rush



Spring Open House

C I N E M A

FILM HIGHLIGHTS

The highlight of 2007-08 was the celebration of the 10th Anniversary of the Art Center Cinema. The celebration included on-screen trivia highlighting obscure facts from the films shown during the first ten years, t-shirts with a list of films, anniversary donation punch cards, balloting for most popular film, and recognition of people who have been involved with the cinema. The celebration concluded with a sold-out dinner for 80 guests and a screening of *Little Miss Sunshine*, voted the decade's most popular film shown at the cinema.

FILM DISCUSSIONS

Roger Shimomura: *The Cats of Mirikitani*; Janelle & Troy Schremmer: *Chalk*; Panel of speakers (Pete Brungardt, John Mize, Stuart Wilson, Sydney Soderberg): *Sicko*; Wes Jackson: *The 11th Hour*; Henry Sanders: *Killer of Sheep*.



S U P P O R T

2007-2008 FILMS

The Wind That Shakes
the Barley
Waitress
The Cats of Mirikitani
Hot Fuzz
Chalk
Away from Her
La Vie en Rose
Offside
Once
Sicko
A Mighty Heart
The 11th Hour
Manhattan Short Film
Festival 2007
No End in Sight
Golden Door

Killer of Sheep
Becoming Jane
Joshua
Blame it on Fidel
2 Days in Paris
My Best Friend
Into the Wild
Eastern Promises
The Darjeeling Limited
Pete Seeger:
The Power of Song
Rocket Science
Lars and the Real Girl
Juno
Across the Universe
Vanaja
The Savages
No Country for Old Men

2007 Academy
Awards Shorts
The Diving Bell and
the Butterfly
Atonement
There Will Be Blood
Starting Out in the Evening
The Great Debaters
Persepolis
War/Dance
Caramel
How She Move
The Band's Visit
In Bruges
The Other Boleyn Girl
The Counterfeiters
Miss Pettigrew Lives
for a Day
Paranoid Park
Young@Heart

STAFF

SALINA ART CENTER

Executive Director/Curator: Heather Ferrell
Director of Community Development: Wendy Moshier
Curator of Education: Ann Marie Kriss
Contract Educator: Connie Burket
Communications Coordinator: Libby Shoup
Finance and Operations Administrator: Heather Greene
Gallery Manager: Joshua Smith
Curatorial Assistant: Stefani Schrader
SummerART Assistants: Hannah Gebhart, Jessica Wyatt
Gallery Attendants: Toby Gebhart, Hannah Gebhart, Janie Hammerschmidt, Anne Hoekstra, Tammy Jarvis, David Kline, Julie Leiker, Brianna Lennox, Anne Parker, Stefani Schrader, Chris Seitz, Janine Strickland, Whitney Vaughan, Jessica Wyatt

INTERNS

Graphic design: Kay Hakoda, Tina Clark
Gerry Neustrom: Julie Leiker

ART CENTER CINEMA

Director: Heather Smith*
Film Curator: Rosemary Heidrick*
Reviews: David Cooper*
Manager: Joe Riley
Head Projectionist: Gary Chrisben
Projectionists: Katy Anderson Kitchen, RaQuita Davis, Toby Gebhart, Stefani Schrader, Jessica Wyatt
Tickets/Concessions: Paige Britegam, Steve Britt, Kaci Critchfield, John Dorsey*, Hannah Gebhart, Toby Gebhart, Quint Hall, Hannah Hemmer, Katy Anderson Kitchen, Ann Neumann*, Stefani Schrader, Donna Shafer*, Mike Soetaert*, Connie Stevens*, Melanie Terrill*, Callan Turner, Whitney Vaughn, Kristy Yenkey*, Jessica Wyatt, Cindy Zimmerman*

GERRY NEUSTROM JUROR

Mary Sue Foster

TEACHERS

Discoverers: Jon Rappeleye, James Penquite, Katy England, Lori Wright
MultiARTs: Katy England, Tamara Howe
Second Sundays: Anne Nettleton
Snapshots: Lee Becker, Robin Ginther, Lori Wright
SummerART: Sue Banker, Julie Britton, Shin-hee Chin, Tamara Constable, Katy England, Hannah Gebhart, Anne Hoekstra, Bill Hottman, Barbara Houdek, Tammy Jarvis, David Kline, Cindy Mahanay, Anne Nettleton, Lynne Ryan, Jill Werner, Lori Wright

* volunteer staff

BOARD OF DIRECTORS

Peter Johnston,
President

Sydney Soderberg,
Vice President

Joe McKenzie,
Secretary

Mark Ritter,
Treasurer

Bob Batt

Stacy Clark

Julia Crawford

Judy Edmands

Kelli Exline

Randy Graham

Charley Griffin

Frank Hampton

Paula Knox

David Petty

Katie Platten

Melanie Terrill

ENDOWMENT TRUSTEES

Mark Augustine

Steve Brown

Lynn Gillam

Dusty Moshier

Morrie Soderberg

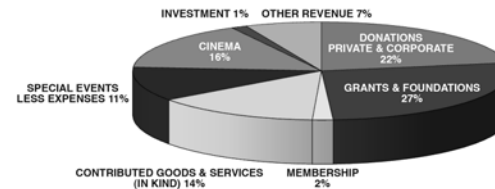
Brad Stuewe

FINANCIAL

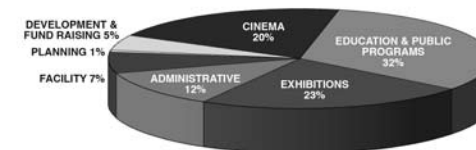
2007-2008 - unaudited

Support And Revenue \$651,732
Expenses \$638,323

SUPPORT AND REVENUE OPERATING FUND



EXPENSES OPERATING FUND



PARTICIPATION

ADULTS - 10,620
CHILDREN - 6,240
FILM - 14,510
TOTAL - 31,370

MEMORIALS

Anna Divine
Katherine Marietta
Anne Parker

HONORARIUM

Mark Smith &
David Petty
Brad Stuewe

IN-KIND CONTRIBUTIONS

City of Salina
Construction Rental
Kennedy & Coe
Doug Kroeger
MSF Industries
Salina Media Group
Salina Parks &
Recreation
S & S Contracting
Jan Wilson

IN-KIND CINEMA CONTRIBUTIONS

David Cooper
John Dorsey
Rosemary Heidrick
McDonalds
Pepsi-Cola Bottling Co.
Salina Journal

GRANTS AND FOUNDATIONS

Anonymous
Greater Salina
Community Foundation
Horizons – Salina Arts
& Humanities
Commission
Kansas Arts
Commission
Mildred and Rolland
Middlekauff Foundation
Community Health
Investment Program
of the Salina Regional
Health Foundation
and the Salina Regional
Health Center
Target
Teasley Foundation
USD 305
Verla Nesbitt Joscelyn
Foundation
YW Legacy Fund

VOLUNTEERS

EXHIBITIONS COMMITTEE

Paula Fried
Paula Knox
Frank Shaw
Sandy Wedel
Jan Wilson
Cindy Zimmerman

NEW NARRATIVES COMMUNITY COMMITTEE

Deirdre Hoff
Gerald Gillespie
Ashish Gosh-Hajara
Linda Lawrence
Joe McKenzie
David Petty
Debbie Webb

ARTIST INITIATIVE WAREHOUSE COMMITTEE

MEMBERS
Bob Batt
Fr. Frank Coady
Pam Harris
Charlie Livingston
Betsy Scholten,
Co-chair
Frank Shaw
Barbara Snyder,
Co-chair
Sandy Wedel
Jan Wilson
Norman Yenkey

ARTIST INITIATIVE RESIDENCY PROGRAM

**COMMITTEE
MEMBERS**
Brad Anderson
Katy England
Kelli Exline, *Co-chair*
Randy Graham
Suzy Reitz
Sandy Wedel, *Co-chair*
Jan Wilson
Cindy Zimmerman

DOCENTS

Dana Atwell
Jo Buchanan
Ruth Cathcart-Rake
Harley Elliott
Kelli Exline
Paula Fried
Paula Knox
Michelle LaViole
Greg Senseman
Barbara Snyder
Carolyn Wedel
Jan Wilson
Cindy Zimmerman

OPERATIONS

Bud Gier
Ella Gier

Ann Neumann
Connie Stevens
Pat Tomlins
Kristy Yenkey

CINEMA FILM COMMITTEE

David Cooper
Shawn Crawford
Gary Demuth
Rosemary Heidrick
Lana Jordan
Marti Kruckemyer
Mary Lemon
Ann Neumann
Linda Radke
Donna Shafer
Stacey Ulrich
Jan Wilson
Kristy Yenkey
Cindy Zimmerman

CINEMA FILM PROGRAMS

Bob Batt
Wes Jackson
John Mize
NAACP
Youth Step Dancers
Henry Gayle Sanders
Troy and Janelle
Schremmer
Roger Shimomura
Sydney Soderberg
Stuart Wilson

OPEN HOUSES

Amanda Calvin
Jordan Floyd
Rebekah Gaston
Courtney Kelley
Ken Krier
Gordon Lashell
Quentin Lashell
Katie Long
Joe McKenna
Dusty Moshier
Courtney Moye
Donna Salyer
Alexa Sharp
Scott Snyder
Becky Staton
Shannon Wallace
Jerrica Wheeler

GRAPE EXPECTATIONS COMMITTEE

Jane Gates
Katie Junk
Melissa Anderson
Maisee French
Trisha Gary
Carrie Gilliland
Kristin Hernandez
Cheryl Murray
Barbara Neustrom
Karla Tillberg
Tiffany Wells
Brigid Hall
Marilyn Maes
Kizza Siemers
Doreen Simpson

Mary Thompson
Chris Young

GRAPE EXPECTATIONS

Mike Chaloud
Coldwell Banker-
Antrim Piper Wenger
Realtors
Murray Gorman, Caper's
Jazz Tangent
Land Title Services, Inc.
The Mortgage Company
Dusty Moshier
Boyd Smith
Standard Beverage
Corporation
Terry Zimmer

TABLESCAPES

Katy England
Peggy Frank
Margy Hogarty
Brigid Hall
Rose Pace
Susy Reitz
Salina Newcomers
& Friends
Kellie Skidmore

GERRY NEUSTROM

Steve Britt
Janie Hammerschmidt
Randy Hardy

PIGNIC

COMMITTEE

Randy Hardy
Denice Justus
Robert Justus
Andy Davis
Brandon Ebert
Karen Meier
Rod Meier
Amanda Michaelis
Leah Milbradt
Chery Parr
Penni White
Ann Arkebauer
Kelly Davert
Sue Dieckhoff
Cyndy Knutson
John Knutson
Adrienne Mammen
Lee Romaniszyn
Don Vancil
Marilee Vancil
Brian Weisel
Judy Weisel
Morrie Soderberg

PIGNIC

Airgas
Boulevard Brewing Co., Inc.
Construction Rental
Crown Distributors
East Crawford Wine & Spirits
First Presbyterian Church
Todd Michaelis
Brigid Hall
OCCK
Outlaw Cycles
Pepsi-Cola Bottling Company

Mark Ritter
Barb Roets
Salina Central Football Team
Salina Iron & Metal Co.
Stiefel Theatre
Terry Zimmer

GALLERY WALKS

John Blackwell
Gerald Gillespie
Deirdre Hoff
Ryan House
Phil Kerstetter
Phil Meckley

EXHIBITION ASSISTANTS

Steve Britt
Priti Cox
Toby Gebhart
Blaine Knox
Mike Soetaert
Jack Shoup
Joey Thompson

SUMMERART

Sidney Bowers
Ti'Ara Erving
Sierra Gwin
Alexis Jarvis
Courtney Kelley
Mary Lamb
Mary Ralston
Sydney Rayl
Tim Smith
Scott Snyder

CINEMA

ANNIVERSARY

ADVISORY

COMMITTEE

Katy Anderson Kitchen
Tony Dong
Charley Griffin
Ann Neumann
David Norlin
Debbie Payne
Mike Russell

10TH ANNIVERSARY

CELEBRATION

COMMITTEE

Mary Nell Beatty
Frank Coady
LouAnn Dunn
Brigid Hall
Margy Hall
Pam Harris
Marti Kruckemyer
Mary Lemon
Ann Neumann
Debbie Payne
Karla Prickett
Betty Schmidt
Betsy Scholten
Heather Smith
Mike Soetaert
Connie Stevens
Melanie Terrill
Sandy Wedel
Jan Wilson
Kristy Yenkey
Cindy Zimmerman

2007 - 2008 SALINA ART CENTER DONORS AND MEMBERS

PARTNER

Anonymous
Anonymous
CK Ranch,
Jack & Donna Vanier
CHIP-Salina Regional
Health Foundation
Brad Stuewe & Paula Fried
Verla Nesbitt Joscelyn
Foundation
Teasley Foundation

BENEFACTOR

Mildred and Rolland
Middlekauff Foundation
Richard & Sallie Morrison
Sunflower Bank

ADVOCATE

Martha Rhea & James Allen
Bill & Jane Alsop
John & Debbie Divine
Randall & Saralyn Hardy
ISG Technology, Inc.
John & Kristin Gunn
John K. Vanier
Family Foundation
Jeff & Paula Knox
C.E. Livingston
Dusty & Wendy Moshier
Tom & Jan Wilson
Norm & Kristy Yenkey

SUSTAINER

Bennington State Bank
Mike and Debra Berkley
Crown Distributors
First Bank Kansas
Tex E. & Elizabeth E. Fury
Fund
Jeff & Lynn Gillam
Green Lantern Car Wash
Barbara Hauptli
Craig & Brenda King
Barbara Macdonald
Tom and Katie Platten
Mark & Barbara Snyder
Connie Stevens
Target
Mark & Carolyn Wedel
Alan & Sandy Wedel
Ruth Willis

PATRON

Shannon & Jo Buchanan
Paul & Carol Junk
Frank & Jeanne Norton

SUPPORTER

Bob & Marcia Anderson
Bill & Connie Ballou
Mike & Mary Nell Beatty

Coldwell Banker-
Antrim Piper Wenger
Realtors
Construction Rental, Inc.
Clay & Judy Edmands
Rob & Kelli Exline
Tom & Jane Gates
Randy & Lisa Graham
Charley & Linda Griffin
James & Margy Hall
James & Brigid Hall Family
George & Joan Jerkovich
Gary & Lana Jordan
Land Title Services Inc.
Luis Alfredo Lopez & Claudia
Perez-Tamayo
Rod & Karen Meier
The Mortgage Company
Becky Morrison Foundation
Mark Ritter
James D. & Diane Sampson
Jim & Betsy Scholten
Security Savings Bank
See To Learn,
Salina Optometrists
Scott & Libby Shoup
Kurt & Kitza Siemers
Morrie & Sydney Soderberg
State Farm Companies
Foundation
Jack & Marsha Stewart
Charles & Carolyn Walker

FRIEND

Dusty Achterberg
Bob & Maryellen Batt
Larry & Judy Beck
John & Karen Black
Sheryl Brooks
Paul & Connie Burkert
Barton & Kate Bycroft
Bill & Ruth Cathcart-Rake
Jerry & Carol Exline
Heather Ferrell
Rick & Angie Frisbie
Heather Greene
M Alan & Kathy Hale
Phil & Amy Hemmer
Tom & Maggie Hemmer
Cindy Zimmerman
Tom and Katie Platten
Harry & Ann Jett
Tom & Melinda Jett
Denice & Robert Justus
Kansas Gas Service,
James Lambert
Suzie Kastner
Kevin & Tracy Koehler
Alan & Marti Kruckemyer
Corlene Lange
Lewis & Luci LaPierre
Leenders-Weaver Family
Jim & Marilyn Maes
Earl Matthews
Joe & Mary Lou McKenzie
Gayle & Jane McMillen
Meadowlark Hills

Mark & Jeanette Mikinski
Phil & Janet Miller
Michael Mortimer
Devine Norris
Jack & Fran Paxton
Tom & Denise Peebles
Bill & Marynell Reece
Tom & Ginger Reid
Gordon & Mary Reist
Salina Iron & Metal,
Bob & Lori Butts
Dave & Debbie Sellers
Greg & Ginger Senseman
David & Linda Smith
Melanie Terrill
& Mike Soetaert
Margaret Walker

ASSOCIATE

Chuck & Janda Allred
Wanda Anderson
Anonymous
Dave & Donna Antrim
Les & Louise Appleby
Arrow Printing Co., Inc.
Henry Barclay
Mark & Sherie Bell
Larry & Marge Bengtson
Ralph & Carolyn Bennett
Jim & Kay Berglund
Lila Berkley
Pat & Linda Bolen
John & Suzie Broberg
Bruce & Mary Ann Broce
Jan Broman
Daron Brown
Dick & Joyce Brown
Leland Brown
Steve & Martha Brown
Pete & Rosie Brungardt
Harriet & Louis Caplan
Curtis & Carrie Carpenter
Ron & Nancy Chandler
Jeff Chapman
Fr. Frank Coady
Dale & Beverly Cole
Debra Cox
Shawn & Julia Crawford
Terry & Mary Criss
Jeff & Sherry Denton
Design Central
Sue Dieckhoff
Don & Kathleen Diederich
Stacy Clark & Kenton Driver
Mark & Bernice D'Souza
Larry & Cathy Dunlap
Tom & Lou Ann Dunn
Harold Eagleton
Jeff & Jeanene Ehrlich
First Bank Kansas
Jim & Marjorie Geisendorf
Richard & Rosemary Gibson
Jack & Betty Gillam
Anne Cox & Jim Gould
Helen Graves
Robert Hagen

Peter & Sara Johnston
Mary Lou Reece & Scott Jones
Larry G. & Sonja Kaiser
Jim & Sue Keating
Jack & Mary Kindlesparger
Dean & Loralee Kranzler
Ken Krier
KU Alumni Organization
Don & Mary Laura Lamb
Jeff Lamb
Betsy Lambert
Darris & Jennifer Larson
Aubrey & Nancy Linville
Bob & Rachel Loersch
Eloise Lynch
Ted & Vicky Macy
Bruce & Adrienne Mammen
John Marietta, in memory
of Katherine Marietta
Larry & Barbara Marshall
Frank & Emma McBride
Paul & Brenda McDaniel
Hampton & Julie McDowell
Wes & Jan McMillen
Todd & Amanda Michaelis
Mark & Julie Miller
Robin Miller
Ted & Marge Mintun
Phil & Judy Mitchell
John & Karen Mize
Wayne & Norma Montgomery
Bruce & Julie Moore
Roger & Sissy Morrison
Sandra Mowery
Mike & Cheryl Murray
N Royce & Linda Nelson
Stan & Rosemary Nelson
Wendell Nickell
Jel & Lori Parriott
Larry & Joy Patrick
Dave & Ann Payne
Abner & Kathryn Perney
Tom & Nancy Pestinger
Pete & Rita Peterson
Mark Smith & David Petty
Denny & Loree Poer
Terry & Linda Radke
Sid & Susy Reitz
Dick & Toni Renfro

David Rettele	Earle & JoAnn Bess	Ted & Doris Harder	Doris Mildtyke	Jean Spurney	Design Central	Bob & Linda Salem	Mike Soetaert
Margaret Riley	M. Warren & Ginny Bevan	Fred & Leslie Hargis	Mike & Kay Money	Marshall & Janice Stanton	John & Debbie Divine	Roger & Michelle Sanborn	Solomon Corporation
Jerry & Margaret Robertson	Patrick Bihlmaier	Darlene Harris	Jo Montgomery	Janet Starks	Jim & Marilyn Dowell	David & Bonnie Sanderson	Alan & Sandy Wedel
Lee Romaniszyn	Genevieve Bishop	Pamela Harris	Judy Morrison	Janie & Marty States	Stacy Clark & Kenton Driver	Jim & Betsy Scholten	
Rex & Carol Romeiser	Phil Black	Karen Hauser	Marj Morrow	Larry & Pam Strahan	Harold Eagleton	Security Savings Bank,	GRAPE
Marcia Klingzell & Frank Roth	Blake & Amy Blackim	David & Susan Hawksworth	Larry & Cel Muff	Donald & Diana Tarver	The Earl Bane Foundation	The Bell Family Charitable	EXPECTATIONS
Steve & Lynne Ryan	Robert Boardman	Bob & Paula Haworth	Cynthia Nelson	Cynthia Bibb	Clay & Judy Edmands	Fund	DONORS 2007
Dan & Nicole Sabatini	Ramon & Nathalie Bonilla	Terry & Ann Headrick	Anne Nettleton	& Rich Thibodeau	Jerry & Carol Exline	Greg & Ginger Senseman	ADM
Bob & Linda Salem	Linda Lea Borden	Dan & Peggy Hebert	Art & Connie Neuberger	Iseral W. &	Robert & Mary Exline	Matt & Rita Shaffer	Brad Anderson
Oral & Tracine Saulters	Marilyn Boyce	Marilyn Hines	Ann Neumann	Margaret Thomas Jr.	Rob & Kelli Exline	Mary Kay & Frank Shaw	Arrow Printing
Ed & Lynda Scheele	Dan & Dorothy Boyer	Merle A. & Nancy Hodges	Fr. Kerry Ninemire	Jeff & Mary Thompson	First Bank Kansas	Kurt & Kitza Siemers	Mark & Becky Augustine
Robin Black & Duane Schrag	Carol Brandert	Steve & Anne Hoekstra	David & Janice Norlin	Pat Tomlins	Tom & Jane Gates	Mark & Kellie Skidmore	Mimi Balderson
Mrs. Gerald Sebree	Steve & Nancy Bressler	Mark Zimmerman &	Kevin & Veronica Norris	David & Kristin Van Tassel	Jeff & Lynn Gillam	Mike & Carol Ann Sloo	Jason & Jenee Barth
Steve & Jeanne Sebree	Lauren Bristow	Carolyn Hofer	Marian Page	Bill Veal	Tom & Susie Glenn	Barbara Snyder	Bel Tree Farm & Jerry &
George & Kathryn Shaw	William Clyde	Amy Hoffman	Gerald K. & Jocelyn Palmer	John & Bette Sue Wachholz	Robert Goodwin	Morrie & Sydney Soderberg	Marlene Eck
Mary Kay & Frank Shaw	& Patricia Brown	Mary Frances Hogg	Diane Pancake	Matthew & Marlene Wagoner	Green Lantern Car Washes,	Melanie Terrill &	Best Dinners
Roger Shimomura	Tim & Rachel Epp Buller	A.J. & Marty Holmquist	Anne Parker	Jim, Sandy & Garrett Ward	Charlie Walker	Mike Soetaert	Blue Heron Tree Company, LLC &
Flavel & Louise Simcox	Brad & Jeanne Byquist	Bill & Linda Hottnan	Robin Parker	Wallace & Jane Weathers	Charley & Linda Griffin	Ed French	Heidi Brown
Mike & Carol Ann Sloo	Jane Caporelli	Larry & Barbara Houdek	Cheri Parr	Wallace N. Weber	Dean & Betty Groves	Marshall & Janice Stanton	Shannon & Jo Buchanan
Larry & Joy Smith	Chuck & Liz Carroll	House of Sight and Sound	Jack & Ann Parr	Kathleen R. & Kermit Wedel	Jerry & Amanda Gutierrez	Connie Stevens	Bob & Lori Butts
Bob & Susie Stinson	Randy & Jan Clark	Mr. & Mrs. Jack Howard	Stan & Marilyn Patterson	Jan Weiner Gallery	M. Alan & Kathy Hale	Milton I. Stiefel	Arnold & Lisbeth Cabrera
Marilyn & Dan Stone	Larry & Laurie Colahan	Jon & Shirley Isin	Mike & Debbie Payne	Tom & Jan Weis	James & Margy Hall	Marjorie Streckfus	Mollie Carter
Lawrence & JoAnn Stoskopf	Kevin & Stephanie Cool	Jim & Kay Jarvis	Elmer & Wilma Pearse	Barry & Meta West	Frank & Izzy Hampton	Paula Fried & Brad Stuewe	Hud Chapin
Marjorie Streckfus	Stan & Priti Cox	Ken & June Jennison	John & Carol Pearson	Terry & Kathy White	Randall & Saralyn	John & Deaneil Tacha	Ken Cochran
Karl & Connie Stutterheim	Jim & Becky Cram	Robert & Linda Jensen	Mark Pettijohn	Michael & Carol White	Reece Hardy	Jim & Joyce Trower	Coldwell Banker Antrim-Piper
Jim & Eleanor Sullivan	Carroll & Jean Cyr	Alan Jilka	Jerry & Sharon Pettie	Pat Wick	Barbara Hauptli	UMB Bank	Wenger, Realtors
Don & Bette Timmel	Andy & Sarah Davis	Barbara Johnson	Bill & Kathleen Pierson	Don & JoAnn Wilcox	Dan & Peggy Hebert	United Radiology Group,	Doug & Louise Comfort
Jim & Joyce Trower	Wayne & Peggy DeBey	Lois Johnson	Dave & Anita Popelka	Doug & Carmen Wilson	Jeff & Sherry Ingles	Ray House	Fred Counts
Don & Marilee Vancil	Max & Karma DeForest	Bob & Pam Jones	Bob & Pam Jones	William Wilson	J.E. & L.E. Mabee	Mark & Carolyn Wedel	Jim Cram
Mike & Penny Walker	Dennis & Janet Denning	Donley & Jann Jones	Nancy Presnal	Tom & Eva Winkler	Foundation	Alan & Sandy Wedel	Julia Crawford
Patricia Traxler	Sherry Denning	John & Gig Jones	Shannon Rayl	Rob & Donna Winter	George & Joan Jerkovich	Gary & Mary Anne Weiner	Crestwood Cabinets
& Pat Wallerius	Dwayne & Cheryl DeTurk	Mark & Carolee Jones	Richard & Ruby Reece	Bruce & Margaret Wyatt	Harry & Ann Jett	Ruth Willis	Del's Electronics
Ken & Nina Warren	Consuelo Choca Diaz	Russ & Jackie Jones	Jo Reed	Kathrine Young	Tom & Melinda Jett	Tom & Jan Wilson	Dustin & Heather Denning
Bob & Pat Weber	Lonny & Kelley Drake	Bruce & Caroline Kahler	Bob & Vernette Regier	Rolland & Sharon Zier	John K. Vanier	Barbara Wilson	Dental Care of Salina &
Ken & Darda Wedel	Shirley Drawbaugh	Jeffery Kasoff	Chuck & Cindy Regier		Family Foundation	Billie Winkler	Jason Wells
Brian & Judy Weisel	Henry Dreher	Chuck & Anita Kelley	Donald & Carvel Reinsch		Peter & Sara Johnston	Brian & Julie Wood	Dillon's
Janet Wendland	Liz Duckers	Terry & Eva Kelley	Jon & Kate Richards		Crosby Kemper	Norm & Kristy Yenkey	Stacy Clark & Kenton Driver
George & Wilma Wheeler	Kim Fair & Randy Duncan	Norm & Sherrie Kelly	Jesse & Brenda Robben		Jeff & Paula Knox		Tom & Lou Ann Dunn
Ronald & JoAnn Whitmer	Jerry & Mary Dusenbury	Charles Kephart	Charles Robben		Bill & Dana Kossow		Hanna Eastin
Barbara Wilson	Gerald & Marlene Eck	Kenneth & Nancy	Mark Roberts		Alan & Marti Kruckemyer		Katy England
Billie Winkler	Harley Elliott	Klostermeyer	Jim & Nancy Roderick		Corlene Lange		Jeff Ehrlich
Ada Wood	Mary Beth Engleman	Bill Knox	Barb Gustch & Nyla Romeiser		Darris & Jennifer Larson		Anonymous
Woods & Durhan, Chtd.	Bob & Mary Exline	Mark & Sherry Krehbiel	Chris & Callie Rost		Dennis & Judy Lilly		Bob & Maryellen Batt
Lee & Chris Young	Mark Fabin	D. Anne Kresin	Hank & Jo Royer		Aubrey & Nancy Linville		Garry Crawford
Dexter Eggers	Karen Fallis	Greta Lagerberg	Mary Ann Rupp		C.E. Livingston		Expressions
& Ann Zimmerman	Donna Fitzgerald	Glen Lakes	Mike Russell		The Market Shop, Jim Loader		John & Debbie Divine
	Mike & Joan Forristal	Mike & April LaMarca	Scott & De De Ryan		Arrow Printing Co., Inc.		Clay & Judy Edmands
MEMBER	Maleta Forsberg	Joy Lamb	David & Bonnie Sanderson		Mark & Becky Augustine		Todd & Amanda Michaelis
John R. Adams	Kurt & Jean Fredrickson	Mike & Bobbie Lamone	John & Madge Saville		The Bank of Tescott		Henry Barclay
Bill & Katie Allen	Babette Freeman	Art & Kay Leckband	John & Betty Schmidt		Robert & Maryellen Batt		Phil & Judy Mitchell
Nick & Debbie Alvarez	Andrea Fuhrman	Darrell & Mary Lemon	Marcia Schmidt		Mike & Mary Nell Beatty		Bruce & Julie Moore
A. Jay & Mary Andersen	Bill & Laurie Garlow	Dennis & Judy Lilly	Chris Seitz		Larry & Judy Beck		Richard & Sallie Morrison
Eric N. & Bonnie Anderson	Rolland & Ella Gier	Ron & Connie Lindholm	LaDonna Shafer		Bennington State Bank		Aaron Morrison
Jody Anderson	Mike & Robin Ginther	Joan Sanders Livingston	Matt & Rita Shaffer		Mike Berkley		Becky Morrison Foundation
Roy & Donice Applequist	Gloria Baxter-Girtz Memorial	Don & Jean Loader	Shashi Sharma		John & Karen Black		Dusty & Wendy Moshier
Steve & Ruth Ascher	Harriet Goff	Jim Loader, The Market Shop	John A. & Patricia Shaver		Pat & Linda Bolen		Art & Connie Neuberger
Bob & Jackie Ash	Michael & Brenda Goll	Lindy & Kathy Lorenson	Chuck & Peggy Simms		Dick & Joyce Brown		Patrik & Barbara Neustrom
Deborah Bailey & Gene Bales	Jason & Cathy Graves	Bill & Cindy Mahanay	Jerry & Linda Simpson		Leland Brown		Kevin & Veronica Norris
Lois Bates	Ron Green	Ivy Marsh	Mark & Kellie Skidmore		Steve & Martha Brown		Frank & Jeanne Norton
Patrick & Stephanie Beatty	David Greiser	Mike & Penny Mattson	George & Cindy Smolich		Shannon & Jo Buchanan		Joel & Lori Parriott
Doris Bedinger	Bill & Annie Grevas	John & Tara McGinty	Rex N. & Cindy Snavely		Bill & Ruth Cathcart-Rake		Mark Ritter
Tom & Roxanne Bell	Dean & Betty Groves	John & Pam McIntyre	Conrad Snider		Fr. Frank Coady		Tim Schildburger,
Sharon Benson	Ken & Susie Guest	Bill & Peggy Medina	Anita Specht		Mikka Gee & Mike Conway		Wombat Productions
Bruce & Marilyn Benyshek	Gary & Joyce Hale	Dennis & Jane Medina	Mark & Lisa Speer		Mark & Julia Crawford		Boyd & Heather Smith
Hal & Eleanor Berkley	Janet Juhnke & Ted Hale	Tim & Janet Meyer	Blaine & Cara Spurney		Dennis & Janet Denning		Mark & Barbara Snyder
							Morrie & Sydney Soderberg
							Melanie Terrill &

Marilyn Hines	Paula Wright & Wally Storey	Dominoes	Sid & Susy Reitz
Margy Hogarty	Paula Fried & Brad Stuewe	Drs. Stacy Clark &	Rejuvenations &
Sally Cobb & Ray House	Bud & Diane Sullivan	Kenton Driver	Jolyn Reed
Jeckyll & Hyde & Marsha Smith	Toni Taggart	East Crawford Wine & Spirits	Renaissance Café
Mike & Katie Junk	Ten Acre Gardens &	Chuck Elsea	Mark Ritter
Paul & Carol Junk	Jane Eberly	Kathleen Elsea	Joe Robins
Angela Keast	The Coffee Club	Georgann Eubanks	De De Ryan
Kirby House	The Mortgage Company	Bob & Mary Exline	Salina Arts &
Chad & Susan Koehn	Jeff & Mary Thompson	Kelli Exline	Humanities
Land Title Services, Inc.	Karla Tillberg	Terry Ferguson	Commission
"Lizcakes" & Liz Mason	Toy Parade	First Presbyterian Church	Salina Central
Jerry Lundgrin	Treasures by Tracine &	Flower Nook	Football Team
Jeff & Stacie Maes	Tracine Saulters	Maleta Forsberg	Salina Community
Jim & Marilyn Maes	Tom & Shelda Vandervoort	Paula Fried	Theatre
Market Shop & Jim Loader	Jack & Donna Vanier	Garden of Eden	Salina Media Group
Lorenson Welding & Machine	Vernons Jewelers &	Jane Gates	Mrs. James Sarvis
Company & Bill Lorenson	Terri Hernandez	Jane Grammer	The Scheme
Martha & David	Walmart	Gutierrez Mexican	John Schmidt
Bary Martin	Carolyn Wedel	Restaurant	Jim & Betsy Scholten
Mike Millikan	Mark & Carolyn Wedel	James & Margy Hall	Boyd Smith
Richard & Sallie Morrison	Brian & Judy Weisel	Randy Hardy	Boyd & Heather Smith
Roger & Sissy Morrison	Jeff & Marcia Wells	Randy & Lynda Hassler	Heather Smith
Dusty & Wendy Moshier	Lynn Wuthnow	Hickory Tree	Smoky Hill Museum Gift Store
Wendy Moshier	Kristy Yenkey	Bill Hottman	Morie & Sydney Soderberg
Murray Land & Cattle Co.	YMCA	Gary Hunter	Solomon State Bank
Patrik & Barbara Neustrom	Chris Young	George Jerkovich	Lance & Molly Snyder
Kevin & Veronica Norris	Lee & Chris Young	Ann Johnson	Blaine & Cara Spurney
Norris Furniture &	Travis & Melanie Young	Shirley Jorgenson	Staff of the Salina Art Center
Sherry Denning		Steve & Rhonda Kesner	Connie Stevens
On the Pot & Robin &	PIGNIC DONORS 2008	Ann Marie Kriss	The Stiefel Theatre
Julie Cates	Airgas Mid South	Lockett Companies &	Paula Wright & Wally Storey
Rose Pace	Abilene & Smoky Valley	Grover Simpson	Glenn Stroer
Tom & Nancy Pestinger	Railroad & Excursion Train	Adrienne Mammen	Randy Syring
Tom & Katie Platten	Arrow Printing	Martinelli's	The Bank of Tesco
Prairie Lotus & Kate Williams	Art Center Cinema	Karen Meier	The Hair Loft & Tina Lanoue
David & Beth Prendergast	Brad Anderson	Rod Meier	Jack & Donna Vanier
Susy Reitz	Bennington State Bank	Rod & Karen Meier	Vidricksen Dist. Co. Inc.
Chris & Callie Rost	Richard Bergen	Todd & Amanda	Monte & Penni White
Dr. Jeremy Ryan	Blades	Michaelis	Penni White
Salina Iron & Metal &	Lila Berkley	Todd Michaelis	Jan Wilson
Bob Butts	Mike & Debra Berkley	Mark & Julie Miller	Tom Wilson
Salina Municipal Golf Course	Boulevard Brewing Company	Phil Miller	Tom & Jan Wilson
& Steve Hardesty	Connie Burket	Claudia Moreno	Norm & Kristy Yenkey
Salina Newcomers & Friends	Callabresi Heating & Cooling	Richard & Sallie	Terry Zimmer
Carol Schmidt	& Jerry Callabresi	Morrison	Cindy Zimmerman
ServiceMaster of Salina, Inc.	Candlewood Suites	Dusty Moshier	
& Larry & Pam Strahan	Randy Clark	Dusty & Wendy Moshier	
Mary Kay & Frank Shaw	Stacy Clark	Wendy Moshier	
Showcase Diamond Jewelers	Fr. Frank Coady	Erika Nelson	
& Tonya Montgomery	Steve Coburn	OCCK	
Kurt & Kitza Siemens	Colbert Hills	J.J. and Tammy	
Simply Baby & Christy Lauer	Louise Comfort	O'Connor	
Grover & Mary Beth Simpson	Construction Rental	Outlaw Cycles	
Kellie Skidmore	Coop's Pizza	Cheri Parr	
Gerard & Marsha Smith	Country Inn & Suites	Pepsi-Cola	
Larry & Joy Smith	Cross-Midwest Tire Company	Bottling Company	
Barbara Snyder	Crown Distributors &	Pete & Rita Peterson	
Morie & Sydney Soderberg	Mark Ritter	Rob Pickrell	
Spotted Mule & Melinda Jett	Andy & Sarah Davis	Rob & Barb Pickrell	
Standard Beverage	Designs by Cunningham	Reed & Elliott Jewelers	
		& Chuck Elliott	
		Brian & Judy Weisel	

FROM THE DIRECTOR

Another year has passed for the Salina Art Center filled with exceptional accomplishments, a deepening sense of community, and progress toward our exciting vision for the future. An essential guide for our journey has been our strategic plan which includes among its primary goals – *Enhance High Quality Exhibitions, Nurture Art & Artists, and Engage a Broader Audience*. While these are only three goals from our plan, they serve as an important framework for how we examine the past year and evaluate our success in achieving our mission to *create exchanges among art, artists, and audiences that reveal life*.

Exhibition highlights from this last year include three major thought-provoking exhibitions: *Jon Rappleye: Strange World, New Narratives: Contemporary Art from India*, and *Leaded: The Materiality and Metamorphosis of Graphite*. *Leaded* provided us with an opportunity to explore process and materials, and learn more about sixteen international, contemporary artists who creatively utilize the physical nature of graphite as the content for their work.

New Narratives featured over sixty works by twenty-one of India's most exciting and well-known artists, and was the first U.S. exhibition to feature artwork of the 21st century created in India. Organized by the Chicago Cultural Center, *New Narratives* was one of the Art Center's most involved and complex exhibitions. It included a variety of new media, oversize sculpture, and elaborate installations (that challenged both staff and volunteers), as well as an in-depth and diverse program series that drew heavily upon community participation and stimulating dialogue concerning the commonalities between India's rapidly changing culture and our own. The Art Center was especially pleased to deepen its partnership with Kansas Wesleyan University, which offered an expanded venue for the show and additional programming opportunities.

Curated by the Art Center, *Strange World* was organized in conjunction with our first *Artist Initiative* artist-in-residence, New Jersey artist Jon Rappleye. This past fall, Rappleye spent two months living in Salina and working in a temporary studio in the Art Center's education wing. He engaged the Salina community through a series of lectures, education workshops, informal dinners, outings, and visits with local and regional artists. As an experienced resident artist, Rappleye also provided invaluable insights regarding the Art Center's program and met several times with our Residency Committee.

Convening throughout the year, the Residency Committee promoted and fine-tuned the program working with Art Center staff to select the first round of artists for 2007-2008 including: Matthew Burke (June/July 2008), Max-Carlos Martinez (August/September 2008), and Carrie Scanga (Spring 2009). In July 2008, the Art Center will open its newly renovated Warehouse on 4th Street for its first resident artist, Matthew Burke. Our *sincere gratitude* is extended to all our community donors, volunteers, and committees, as well as Dan Sabatini Architects, Lawrence, Kansas, and Norm Yenkey who oversaw the renovation project.

THE SALINA ART CENTER THANKS ITS GENEROUS CONTRIBUTORS FOR THEIR SUPPORT OF OUR EXHIBITIONS, EDUCATION PROGRAMS AND EVENTS

As a community-based contemporary art center we strive to be relevant in our community and to create a welcoming and inclusive environment open to everyone. One of our goals in achieving this is to engage a broader audience so that we may better serve our community. And our commitment to creativity and quality in our education and public programs is a vital means in how it's accomplished. This year was no exception in the quality of films and accompanying discussions, as well as the continuance of several programs such as *Teachers' Night Out* and *First Thursday Art Rush*, which expanded the discourse and connected audiences. Through these programs and the strengthening of collaborative relationships, the Art Center was able to significantly increase its attendance this past year. In turn its relevancy grew through education programs and tours – including over 90 tours offered in conjunction with exhibitions this past year.

As the year closed in June, so did my tenure as the Salina Art Center's Executive Director. I appreciate the tremendous opportunity to have directed the Art Center these past few years. I feel privileged to have been a part of the Art Center's history, to share a passion for its mission, and to serve a leadership role in a new phase in its development as an organization as seen in its high quality exhibitions, thriving artist-in-residence program, new and expanded community-based programs, increased staff professionalism, and an exciting plan for its future. I could not have been as successful with these accomplishments without a wonderful and dedicated staff, an exemplary board of trustees, and a lively cultural community that is singular and inspirational. Thank you.



Heather Ferrell

*Executive Director/
Curator
Salina Art Center*



The Salina Art Center is accredited by the American Association of Museums.





SALINAartcenter

242 SOUTH SANTA FE

SALINA KS 67401

WWW.SALINAARTCENTER.ORG

Cover: Jon Rappleye, *Awakened in the Peacable Kingdom*, 2007, acrylic and spray enamel on paper, 38" x 50"; Jon Rappleye, *In the Quiver of the Kingdom*, 2007, acrylic and spray enamel on paper, 40" x 51"; Courtesy of the Artist and the Jeff Bailey Gallery, New York; Inside front cover: Anju Dodiya, *Cloud Hunter*, 2005, acrylic on mattress, 78" x 46" x 7"; Collection of Mr. Prshant K. Lahoti, Hyderabad; Inside back cover: Nalini Matani, *Broken Alice I - Living in Alicetime*, 2005, watercolour and acrylic reverse painting on acrylic sheet, 60" x 48"; Back cover: Mark Sheinkman, *4 19 2007*, 2007, oil, alkyd and graphite on canvas, 66" x 60" x 2"